

# LO-flo

## PITOT TRAVERSE STATION

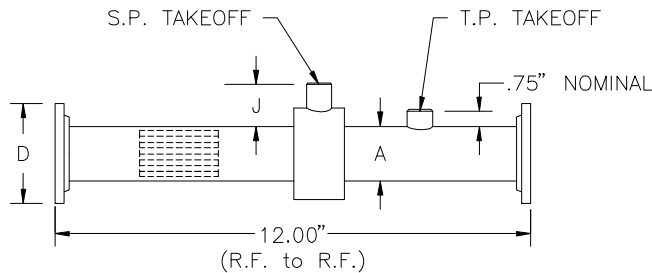
### MODEL F

**STANDARD CONSTRUCTION**

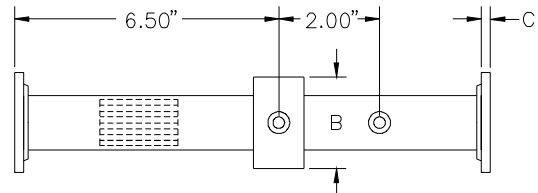
<p><b>Casing.</b></p> <p><b>Flanges.</b></p> <p><b>Air Equalizer and Straightener.</b></p> <p><b>Total Pressure Header.</b></p> <p><b>Static Pressure Chamber.</b></p> <p><b>Casing Depth.</b></p> <p><b>Connection Fittings.</b></p> <p><b>Operating Temperature.</b></p> <p><b>Resistance to Flow.</b></p> <p><b>Maximum Static Pressure.</b></p>	<p>Type 316 stainless steel pipe.</p> <p>150 lb. raised face, Type 316 stainless steel.</p> <p>Type 316 stainless steel.</p> <p>Type 316 stainless steel tubing.</p> <p>Type 316 stainless steel.</p> <p>See Dimensional Specifications below.</p> <p>1/4" FPT.</p> <p>Continuous operation to 900°F.</p> <p>0.3 times the velocity head (pressure) of the design flow rate.</p> <p>20 psig.</p>
---	--

**DIMENSIONAL SPECIFICATIONS**

STATION NOMINAL SIZE	A O.D.	A I.D.	B O.D.	FLANGE SIZE	C ASA 150# RAISED FACE	D ASA 150# RAISED FACE	NO. OF TOTAL PRESSURE SENSORS	NO. OF STATIC PRESSURE TAPS	J NOMINAL	EQUALIZER/STRAIGHTENER
.75"	1.05	.92	1.66	.75"	.50	3.88	4	4	1.06	1/8" x2" DEEP
1"	1.315	1.185	1.90	1"	.56	4.25	4	4	1.05	1/8" x2" DEEP
1.25"	1.66	1.53	2.375	1.25"	.62	4.62	6	6	1.11	1/8" x2" DEEP
1.50"	1.90	1.77	3.50	1.50"	.69	5.00	6	6	1.55	1/8" x2" DEEP
2"	2.375	2.245	3.50	2"	.75	6.00	8	6	1.32	1/8" x2" DEEP
3"	3.50	3.334	4.50	3"	.94	7.50	14	8	1.25	1/8" x2" DEEP
4"	4.50	4.334	5.563	4"	.94	9.00	14	8	1.28	1/4" x3" DEEP
5"	5.563	5.295	6.625	5"	.94	10.00	14	8	1.28	1/4" x3" DEEP
6"	6.625	6.357	7.625	6"	1.00	11.00	14	8	1.25	1/4" x3" DEEP
8"	8.625	8.407	9.625	8"	1.12	13.50	14	8	1.25	1/4" x3" DEEP



SIDE VIEW



TOP VIEW

