

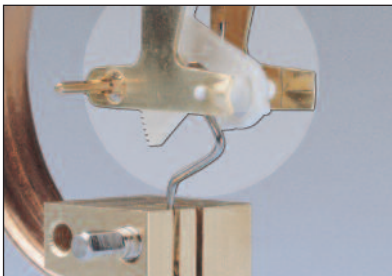
## Exclusive Features Found in Ashcroft® Commercial Gauges

### True Zero™



Just because a gauge reads zero, doesn't mean there isn't any pressure on it. For example, a damaged conventional gauge might read zero, even in a pressurized system. The dial pin won't allow the pointer to fall below zero. With True Zero™, there's no dial pin. So when a gauge with True Zero reads zero, that's just what there is—zero pressure. This gives you big benefits, including increased safety, reduced manufacturing and replacement costs, and faster, easier inspection.

### PowerFlex™

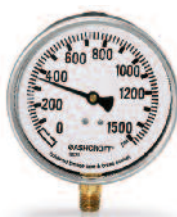


Unlike ordinary gauge movements, which may not stand up to rough handling and demanding applications, the patented PowerFlex™ movement has the power and flexibility to perform under pressure. Independent lab testing has shown that the PowerFlex™ movement is more shock resistant than conventional movement gauges. In addition, its superior vibration and pulsation resistance translates to another big benefit: A longer-lasting gauge, hence less replacement costs.

### FlutterGuard™



Without FlutterGuard™



With FlutterGuard™

Regular gauges on high vibration/pulsation applications have a lot of pointer flutter. So much, in fact, that sometimes it's hard to get an accurate reading. And all that extraneous motion puts excessive wear on gauge internals. So what's the answer? Ashcroft gauges with FlutterGuard™. FlutterGuard provides smooth, steady pointer motion that makes our gauges easy to read and longer lasting. You benefit from a performance similar to a liquid-filled gauge, without the worry of potential leakage. And no fill reduces weight and shipping costs. That's why we say, with FlutterGuard, it's no fill, no flutter...no foolin'.

When it comes to pressure gauges, you want superior performance, outstanding customer support and the expertise to back you every step of the way. For over 155 years, in locations around the world, Ashcroft gauges have stood for quality and performance. Made to highly exacting standards, every Ashcroft gauge is designed to meet the needs of real-world applications. Our engineering and support teams are ready and able to provide the expertise you need, when and where you need it, no matter how demanding your application.

*When it really counts, there's only one choice. Ashcroft®.*

