

VOLU-probe/VS STATION – COMMERCIAL RECTANGULAR CONFIGURATION – STAINLESS STEEL 90° FLANGE



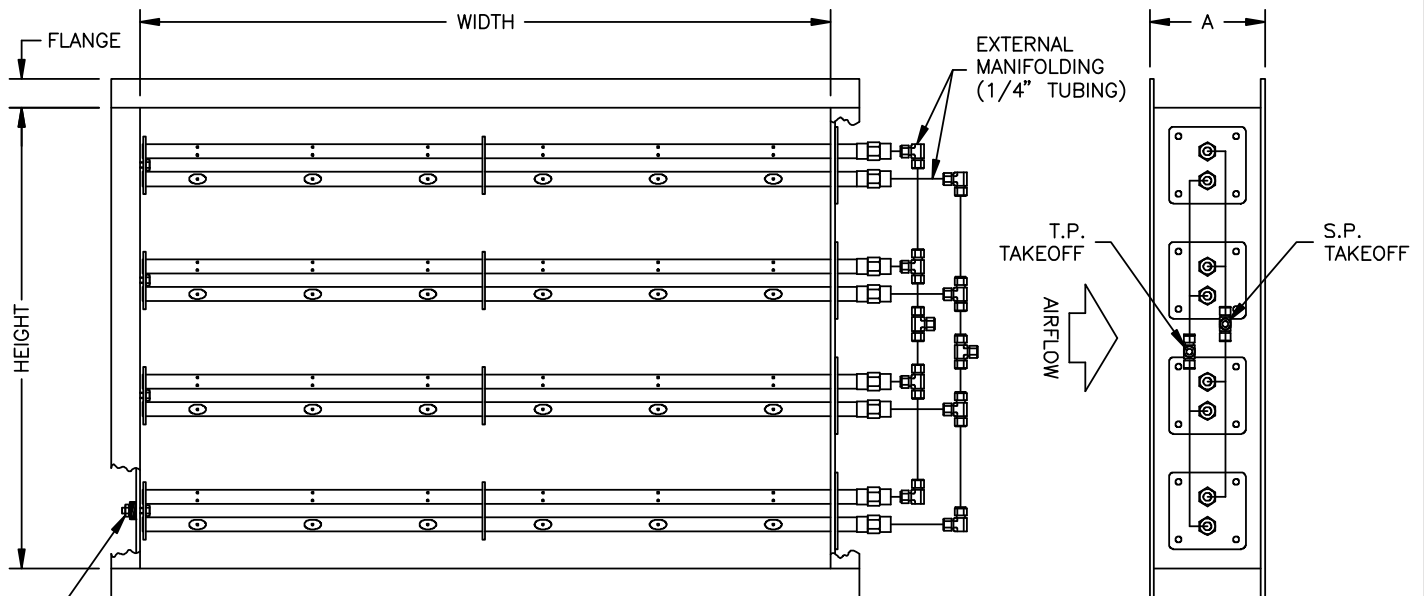
STANDARD CONSTRUCTION

Casing. 14 gauge, Type 316 stainless steel, intermittent welded casing, sealed with silicone RTV.
Flanges. 1-1/2" wide, 90° formed flange for all sizes up to 144" x 144".
Total Pressure Probes. Type 316 stainless steel. Neoprene gaskets.
Static Pressure Probes. Type 316 stainless steel. Neoprene gaskets.
Casing Depth. Refer to chart in "Dimensional Specifications".
Connection Fittings. 1/4" stainless steel compression type.
Identification Label. Stainless steel, tack welded on (Work Order Number, ID Number).

PERFORMANCE SPECIFICATIONS

Accuracy. 2% when installed per recommended minimum installation requirements.
Outputs. Individually averaged signals of total and static pressure.
Operating Velocity. 400 - 4000 FPM.
Operating Temperature. Continuous operation to 200°F.
Directional Sensitivity. Not measurably affected by directional airflows with pitch and yaw angles up to 30°.
Traverse Pattern. Equal area.
Resistance. 0.085" w.c. @ 4000 FPM.

DIMENSIONAL SPECIFICATIONS



HEIGHT	NUMBER OF PROBES
8" THRU 12"	1
>12" THRU 24"	2
>24" THRU 30"	2
>30" THRU 54"	3
>54" THRU 84"	4
>84" THRU 120"	5
>120"	6

WIDTH	A
8" THRU 24"	6.00
>24" THRU 120"	8.00

For **OPTIONAL CONSTRUCTION**, refer to Submittal Sheet
"Optional Construction - Stations" – 3.68.0

