

Type 1007P XOR and 1001T XOR Commercial Refrigeration Gauge



FEATURES

- *Patented PowerFlex™ movement with polyester segment for a gauge that is more shock resistant than conventional movement gauges.*
- *FlutterGuard™ a standard feature in these gauges eliminates pointer flutter.*

Ashcroft® Types 1001T, XOR and 1007P, XOR are designed to meet the unique requirements of the HVAC, automotive and refrigeration industries.

Ashcroft Type 1001T, XOR gauges are designed for refrigerant recovery and recycling units. All gauges for this service are tested for leaks as small as 2.8 x 10⁻⁴ cc per second to ensure superior integrity. Optional connections eliminate potential leaks at threaded joints and also eliminate customer cost for extra fittings.

Ashcroft Type 1007P, XOR gauges are designed for installation on refrigeration manifolds used in testing automotive, industrial and residential air-conditioning units. The ABS case offers rugged durability and corrosion resistance.

PRODUCT SPECIFICATIONS

Ashcroft Model No:	1007P, XOR and 1001T, XOR
Size:	1007P-2½" 1001T-2½", 3½"
Accuracy:	1% at zero, 2% three fourths of scale, 5% last fourth of scale
Case:	Type 1007P- Blue ABS (low pressure) Red ABS (high pressure) Type 1001T-Black steel with studs and U-clamp for panel mounting
Ring:	None
Window:	1007P threaded polycarbonate, 1001T ¼ turn threaded polycarbonate
Dial:	Available refrigerant scales R12, R22, R502, R134A, 410A
Pointer:	Black, aluminum
Bourdon Tube:	Bronze
Movement:	Patented PowerFlex with polyester segment and FlutterGuard; slotted span screw for minor span adjustments
Socket:	Brass
Restrictor:	1007P-0.020" orifice throttle plug 1001T-0.013" orifice throttle plug
Connection:	1007P-¼ NPT lower 1001T-¼ NPT back, ¼ NPT back
Ranges:	30 in.Hg vac./0/120 psi retard to 250 psi; 0-500 psi; 30 in.Hg vac./0/350 psi retard to 500 psi; 0-800 psi
Operating Temperature:	-40°F to 150°F; -40°C to 65°C
Options:	Nonstandard ranges Alternate refrigerant ranges SAE Flare, Solder bib and ferrule connections, Customized dials, Front flange case design (2½" only)

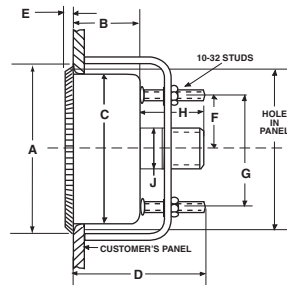
HOW TO ORDER (Typical example)

	25	W	1007	P	H	01L	XOR	140#/V
Dial Size: 2½"	_____	_____	_____	_____	_____	_____	_____	_____
Movement: Patented PowerFlex™	_____	_____	_____	_____	_____	_____	_____	_____
Case Type Number: 1007	_____	_____	_____	_____	_____	_____	_____	_____
Case Material: ABS	_____	_____	_____	_____	_____	_____	_____	_____
Connection Material: Brass	_____	_____	_____	_____	_____	_____	_____	_____
Connection Size/Location: ¼ NPT Lower	_____	_____	_____	_____	_____	_____	_____	_____
Refrigeration Application:	_____	_____	_____	_____	_____	_____	_____	_____
Range: 30"Hg vac/0/120 psi retard to 250 psi	_____	_____	_____	_____	_____	_____	_____	_____

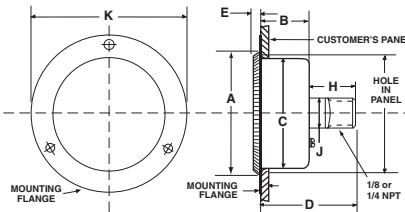
Type 1007P XOR and 1001T XOR Commercial Refrigeration Gauge

DIMENSIONS

Type 1001TH U-Clamp (UC)



Type 1001TH Front Flange (FF)



Case Type 1001T (UC)

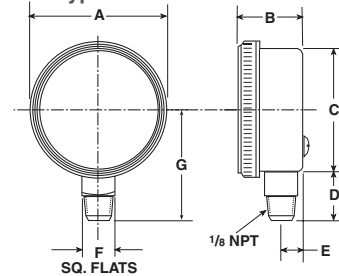
INCHES (MM)	A	B	C	D	E	F	G	H	J	K	Conn. NPT	Weight oz / kg
2½"	2.87 (73)	0.97 (25)	2.57 (65)	1.97 (50)	0.16 (4)	1.00 (25)	2.00 (51)	0.88 (22)	⅝ sq. (14)	—	⅜ or ¼	6.91 oz 0.196 kg
3½"	3.96 (101)	1.00 (25)	3.61 (92)	1.72 (44)	0.20 (5)	1.53 (39)	3.06 (78)	0.88 (22)	⅝ sq. (14)	—	⅜ or ¼	8.40 oz 0.238 kg

Case Type 1001T (FF)

2½"	2.87 (73)	0.97 (25)	2.59 (66)	—	0.17 (4)	—	—	0.86 (22)	⅝ sq. (14)	3.69 (94)	⅜ or ¼	5.64 oz 0.160 kg
-----	--------------	--------------	--------------	---	-------------	---	---	--------------	---------------	--------------	-----------	---------------------

Hole Diameter			
Panel Cut-out	Min. Inches (mm)	Max. Inches (mm)	Max. Panel Thickness
2½" Gauge	2.609" (66.3)	2.750" (69.9)	⅞" (11.0)
3½" Gauge	3.625" (92.1)	3.812" (96.8)	⅞" (11.0)

Case Type 1007P



Case Type 1007P

	A	B	C	D	E	F	G	Weight oz / kg
2½"	2.86 (72.5)	1.14 (29)	2.6 (65.9)	0.9 (23)	0.39 (9.9)	9/16 (14)	2.18 (55.3)	3.39 oz 0.096 kg