

AUTO-purge / CEM

SEQUENCE OF OPERATIONS

IDENTIFICATION CODE

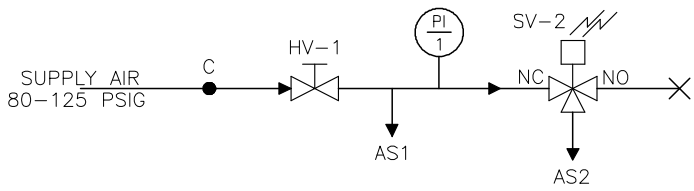
AS1	Pilot Line Air
AS2	High Pressure Purge Line Air
HV-1	Supply Air Shut Off Valve
PI-1	Gauge, Supply Air Pressure, 0-160 psig
R-1	Purge Management Relay (located in a remote MASS-tron/CEM enclosure)
SV-1A	Solenoid Operated (externally piloted) 3-Way Valve, Static (low) Pressure
SV-1B	Solenoid Operated (externally piloted) 3-Way Valve, Total (high) Pressure
SV-2	Solenoid Operated 3-Way Main Air Valve

SEQUENCE OF OPERATIONS

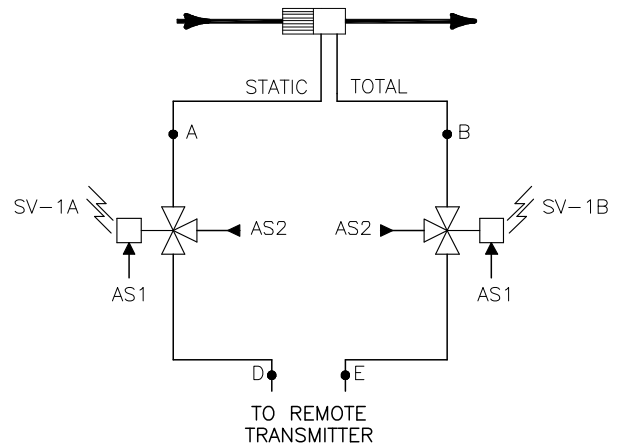
The AUTO-purge sequence is initiated by a smart relay located in a remote MASS-tronII/CEM enclosure. The remote MASS-tron II/CEM flow transmitter automatically holds the last measured value prior to transmitter isolation from the process (the AUTO-purge acknowledgment contact may be used to signal a DCS. Next, the AUTO-purge isolates the MASS-tron II/

CEM from the sensing lines and high pressure air purges the sensing manifolds. After purging is complete, the sensing lines depressurize and the MASS-tron II/CEM is reconnected to process and resumes normal flow measurement. For more detail on valve actuation and timing intervals, see Purge Cycle Timing Diagram (SUB-M030).

SCHEMATIC



SUPPLY AIR SCHEMATIC



STATIC & TOTAL PRESSURE SCHEMATIC

