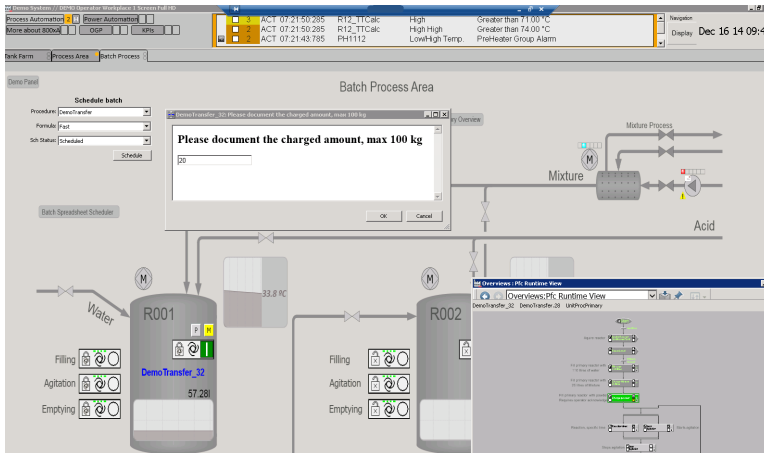

OVERVIEW

System 800xA Batch Management

It's all about flawless batch execution



Batch Management



Integrated batch management

System 800xA Batch Management is a powerful application software package for configuring, scheduling, and managing batch operations improving batch production profitability, consistency, and traceability.

Increased productivity tools provide the agility, speed, and the control needed to respond to increasing production demands by modeling, executing, and tracking information associated with material and control flow across the plant.

800xA Batch Management is aligned with industry standards such as ISA88, ISA95, IEC 61512, and IEC 62264. It is further enhanced by ABB's extensive batch automation expertise. 800xA Batch Management delivers:

- Increased product consistency resulting in better quality
- Easy to use recipe management functions reducing time-to-market
- Integrated production management and control for maximum equipment utilization and minimized operating costs
- Regulatory compliance through the use of embedded system technical features

Functional area overview

Any batch manager can sequence the process when steady-state conditions persist and everything goes according to plan. What happens when unexpected events occur? 800xA Batch Management is the only batch control solution that is uniquely designed to help recover from the unexpected. The key to this is the flexibility that can be designed into batch control strategies with System 800xA.

System 800xA Batch Management supports dynamic recipe parameters. Master recipe procedures can be configured with one or more formulation parameters established as an expression, rather than a constant value. This enables the control recipe to evaluate one or more variable process conditions and dynamically update the formulation parameter at run-time. Improved product quality and reduced processing time are just two of the potential benefits when using dynamic parameters in control recipes.

Often, operator or supervisor intervention in a batch process means aborting the batch recipe procedure and manually completing the batch. 800xA Batch Management provides the tools to allow user intervention to make the necessary adjustments and continue the processing of the batch through the control recipe procedure. An operator or supervisor can easily re-route the batch path to another allowable unit if the originally selected unit is not available or out-of-service.

The most powerful feature, however, is the extensive runtime editing capability. Users with the correct permission level can perform a runtime edit on any currently executing recipe procedure. The runtime edit feature enables the modification of any subsequent operation or phase in the currently executing control recipe without stopping the recipe. Of course, all user-initiated changes are captured in System 800xA audit trail and batch production record.

All process automation systems support interlocking strategies at the control module level. Certainly, interlocks required for safety and preservation of process equipment should reside at the controller level. However, in a flexible batch production facility there could be one or more conditions that are dependent upon the type of material being processed in the unit.

Only 800xA Batch Management provides exception procedures as an extension of the ISA88 procedural model to provide the ability to configure recipe-specific error handling logic. An exception procedure monitors for undesirable product related process conditions and contains corrective measures in case the conditions occurs.

800xA Batch Management includes five primary functions:

- Definition management
- Execution management
- Resource management
- Data collection
- Dispatching / scheduling

Definition Management

Procedure

The master batch recipe procedure, and all nested procedure levels are configured graphically in 800xA Batch Management. The following information can be specified for each individual batch recipe:

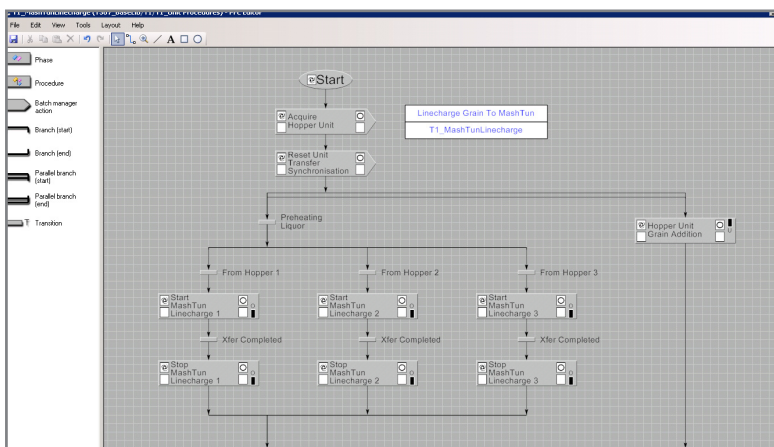
- Procedure
- Formula
- Equipment requirements
- Header and other information

Procedures are configured graphically using the Procedure editor. The diagram is a Procedure Function Chart (PFC) based on ISA88 standards. Strict adherence to the procedure levels specified by ISA88 can be enforced, or, for additional flexibility, the procedure model can be expanded or collapsed. The procedure editor supports the configuration of conditional transitions, logical branching, parallel branching, looping structures and dynamic block labels for superior operational and control capabilities.

The procedure editor supports the creation and management of re-usable procedure building blocks. Unit procedures and operation procedures can be used in multiple higher level procedures. When a modification is made to one of these lower level procedure building blocks, all procedures using that block are updated.

Only System 800xA provides Exception Procedures that provide functionality above and beyond the procedural model of ISA88. Exception procedures provide product recipe specific error handling at the batch procedure level in addition to controller based exception and interlock logic.

Procedure Editor



All procedures are version managed with revision history for each procedure. In addition to maintaining the approved version online, a user configurable number of previous versions of the procedure are stored and are available online. A procedure revision history includes the User ID, full user name, workstation node name, date/ time stamp, comments about the changes made and electronic signatures. The user is prompted to increment the version number each time a development procedure is promoted to an approved procedure. An online comparison of any two versions of a procedure is available via the difference report feature.

Formula

Formula information includes input parameters, process parameters, and output parameters. 800xA Batch Management supports the specification of formula information at any level of the procedure. Formula parameters may also be specified as an expression, rather than a predefined value. This enables the dynamic, real-time calculation of recipe parameters during the batch production execution. The ability to dynamically calculate parameters provides tremendous flexibility.

Equipment

Equipment requirements are specified within the procedure using equipment allocation Batch Manager Action (BMA) blocks. The batch recipe can be configured to reserve equipment for subsequent batch processing, acquire equipment for immediate batch processing, or dynamically select equipment from available equipment based upon configurable selection criteria and attributes.

Header and other information

The procedure header section provides administrative information about the individual procedure. A procedure description as well as free-form header text can be configured. The master recipe version, author, workstation name and creation date are also contained within the header. Standard operating procedures (SOP) can be defined and associated to the procedure. If configured, they can be invoked during the execution of the procedure and display the SOP applicable to the current step in the procedure.

Execution Management

System 800xA Batch Management supports the simultaneous execution of multiple control recipes in parallel. The configured and approved master recipe procedure becomes the control recipe procedure when the batch has been assigned a Batch ID and dispatched for production. Control recipe execution may proceed in one of three operating modes; automatic, semiautomatic or manual.

In automatic mode, procedural elements automatically execute sequentially through the procedure steps when the transition condition following the procedural element is satisfied. 800xA Batch Management communicates parameters, batch mode and state information to the equipment phases executing in the controller. 800xA Batch Management includes a standard phase interface to the AC800M controllers as all of the controllers from the ABB heritage process control systems (e.g. Symphony Harmony, DCI System Six, Advant and Freelance).

800xA Batch Management provides the user with the ability to integrate equipment running on other controllers into the batch control recipe. Function Phase Driver is a user configurable application which maps batch states, commands and parameters between the batch server and user defined OPC points representing the interface to an equipment phase in a PLC or other process controller. This feature is quite useful in process applications that include one or more process equipment skids that are supplied and installed with equipment manufacturer supplied controllers.

Batch execution monitoring

The graphically based recipe procedure is available as a runtime display without any further configuration. During control recipe execution, its

progress can be monitored on the PFC. The current status of each procedure step is represented by a unique combination of colors and symbols as the batch executes.

In addition to monitoring, the control recipe PFC display provides a number of navigation and interaction options, depending on the rights and permissions of the currently logged on user including:

- Navigating to a higher or lower level of procedure function chart
- Changing the operating mode (automatic, semi-automatic, or manual) at any level in the procedure
- Changing the state (running, aborted, stopping, etc.) of any active procedure block at any level in the procedure
- Responding to pending messages, or electronic authentication requests
- Viewing formula information
- Viewing header information
- Navigating to pre-configured active equipment phase aspects

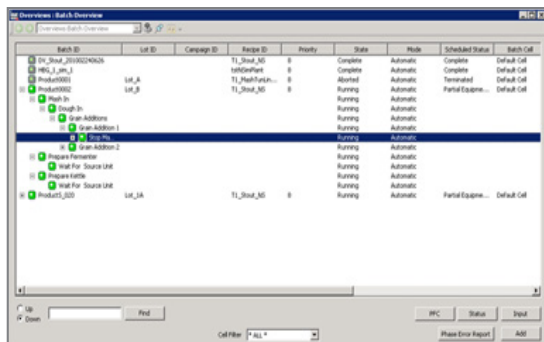
System 800xA also provides simple to deploy graphic configuration objects that provide batch specific information on process graphic displays and enable easy navigation to PFC or batch status displays.

Online recipe editing

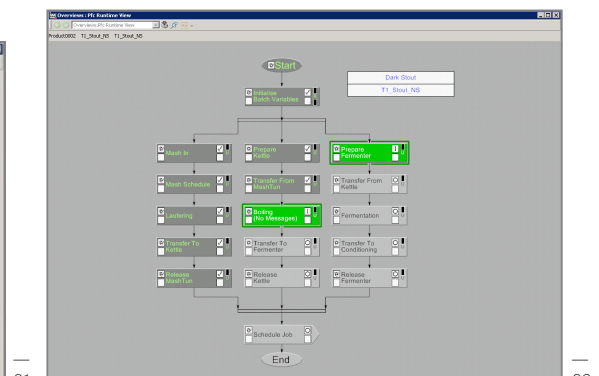
System 800xA provides unique online recipe editing flexibility during batch execution. Authorized users can modify procedure sequence and equipment assignments as well as recipe parameters without stopping any executing control recipe. All changes made to the control recipe are automatically saved in the batch production record.

01 Batch overview

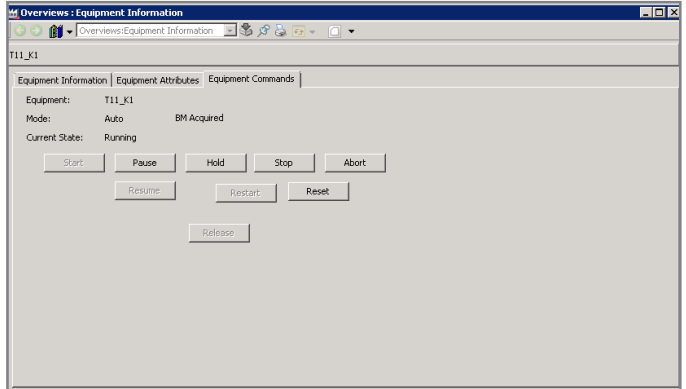
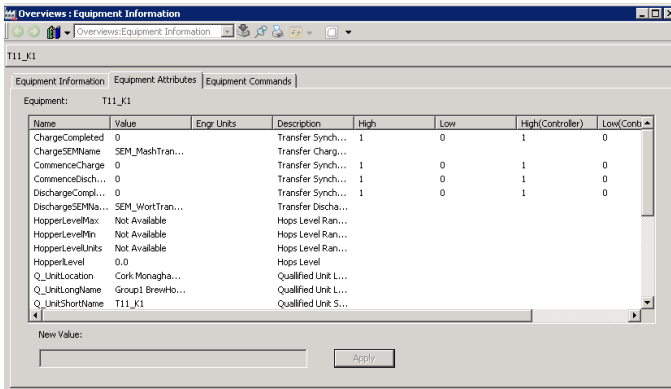
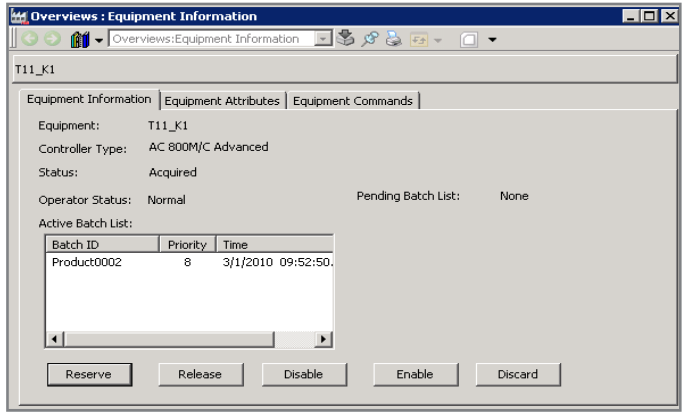
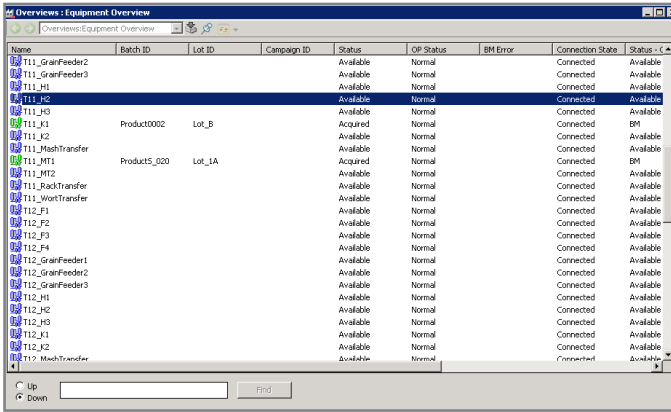
02 Procedure Function Chart



Batch ID	Lot ID	Campaign ID	Recipe ID	Priority	State	Mode	Scheduled Status	Batch Call
TI_Shard_0000000000			TI_Shard_00	0	Complete	Automatic	Complete	Default Call
TI_Shard_0000000001	Lot_01		TI_Shard_00	0	Complete	Automatic	Complete	Default Call
TI_Shard_0000000002	Lot_02		TI_Shard_00	0	Aborted	Automatic	Terminated	Default Call
TI_Shard_0000000003	Lot_03		TI_Shard_00	0	Running	Automatic	Partial Execute	Default Call
TI_Shard_0000000004	Lot_04		TI_Shard_00	0	Running	Automatic	Running	Default Call
TI_Shard_0000000005	Lot_05		TI_Shard_00	0	Running	Automatic	Running	Default Call
TI_Shard_0000000006	Lot_06		TI_Shard_00	0	Running	Automatic	Running	Default Call
TI_Shard_0000000007	Lot_07		TI_Shard_00	0	Running	Automatic	Running	Default Call
TI_Shard_0000000008	Lot_08		TI_Shard_00	0	Running	Automatic	Running	Default Call
TI_Shard_0000000009	Lot_09		TI_Shard_00	0	Running	Automatic	Running	Default Call
TI_Shard_0000000010	Lot_10		TI_Shard_00	0	Running	Automatic	Running	Default Call



Resource Management



Equipment operational displays

System 800xA Batch Management supports network, multi-path and single path equipment configurations. This provides support of complex batch production facilities. The configuration of all units, shared-use equipment modules, and exclusive use equipment modules is integrated with the common object model of the 800xA system. This makes adding or “cloning” a new process unit as simple as copy and paste.

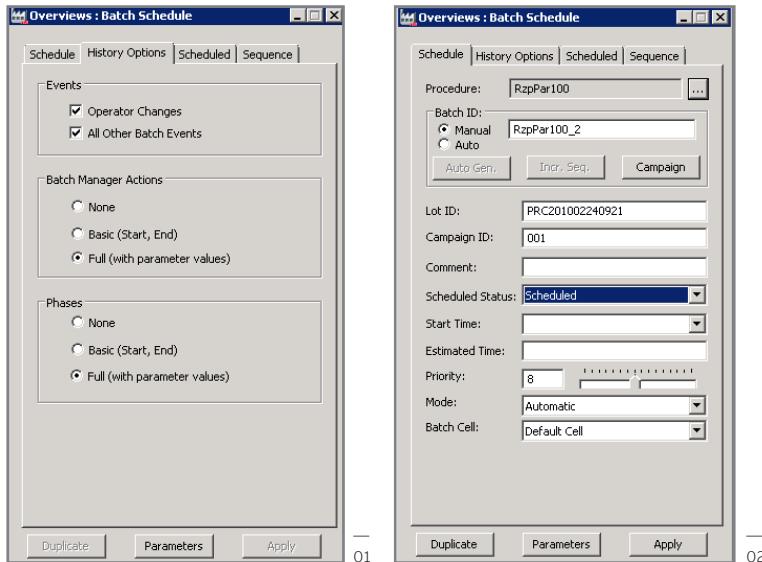
System 800xA is the only system that can use the new unit without having to modify existing master or control recipes. Pseudo-resources can also be configured and used to identify resources, such as an operator, required at specified points in a procedure.

In addition to the equipment allocation BMA procedure blocks, all other resource management functions are accessible from the Equipment Overview display. The following information is presented in tabular format:

- Equipment name and status (available, busy, reserved, acquired)
- Batch, Lot and Campaign ID (when the equipment is allocated to a batch)
- Operating status (normal, disabled)

The equipment information dialog is accessible from the Equipment Overview display. This dialog can be selected for any batch equipment unit appearing on the equipment overview. The equipment information dialog presents current status and provides the user with the ability to manually allocate the equipment, or remove it from service. The equipment specific attributes are also available for viewing from this dialog.

Data collection, tracking and batch scheduling



01 Batch schedule with history options

02 Scheduling display

Batch scheduling

The production scheduling and dispatching functions of 800xA Batch Management are accessed from the Batch Overview display. This display provides a summary of all the batches in the current production queue.

The Batch Schedule window is used to add batches to the real-time production schedule or queue, in an efficient and user friendly manner. Functions available from the Batch Schedule window include:

- Select recipe procedure
- Schedule an individual batch or a campaign of multiple batches
- Duplicate a previously run batch
- Automated or manual entry of Batch ID
- Optionally enter Lot & Campaign IDs
- Optionally enter scheduled start time
- Enter batch specific parameter values

Batch web service interface

For many facilities, the production scheduling functionality provided in 800xA Batch Management is used to schedule the batch manufacturing. However, it is recognized that some organizations have supply chain management solutions, enterprise resource planning systems or schedule optimization software packages in place for the determination of shop floor manufacturing requirements.

800xA Batch Management includes a schedule interface function to facilitate the bi-directional transfer of data between 800xA Batch Management and an external application.

The interface function is deployed as a web service. Web services are technologies that allow applications to communicate with each other in a platform and programming language independent manner. A web service is a software interface that describes a collection of operations that can be accessed over the network through standardized XML messaging. It uses protocols based on the XML language to describe an operation to execute or data to exchange with another web service.

The interface provides pre-defined function calls to provide connectivity with 800xA Batch Management. Read function calls acquire real-time data from the batch system. Write function calls execute limited control over operations in the batch system. Standard read function calls can be used to retrieve the following types of information:

- List of all active batches
- Details from any batch listed in the batch overview
- Details from any approved procedure
- Tag key (batch) data associated with the batch
- Details from any batch equipment

Standard write function calls can be used to perform the following operations:

- Schedule a batch, including values for some or all top-level recipe parameters
- Change a previously scheduled batch, including start time, priority, mode, and parameter values
- Change attribute values on batch equipment

In addition to the application programming environment provided in the batch schedule interface, System 800xA is available with an optional certified interface to the SAP PP-PI module.

The 800xA Enterprise Connectivity Solutions Production Planning Connector facilitates the dispatch of Production Orders from SAP to 800xA Batch Management and monitors the process data to prepare a production response transaction back to SAP.

Batch History and evolution

800xA Production Response Batch History

800xA PR Batch History provides a hierarchical history of batch production data and events. Often in batch process applications, information relationships cannot be pre-configured because they typically depend on the control recipe execution, rather than on some periodic time basis.

800xA PR Batch History has built-in provisions for the organization, storage, this type of information.

800xA PR Batch History can manage three levels of storage. Local, midterm, and long-term. Local is provided with PR Batch History. Midterm and long-term are optional. The three-tier approach allows you to store minimal data locally and long-term data to the extended sources, keeping all data online regardless of when it was recorded.

Each of these storage levels have configurable policies. These allow the user to maintain their production database based on size, number batches and or length of time.

Batch View is a data browser that is provided with 800xA PR Batch History. This unique and easy to use data navigation tool allows the user to browse production data quickly. Traditional data access is also available for reporting applications.

Evolution

ABB has been a pioneer and leader in the design and deployment of batch automation systems on a worldwide basis. ABB has a 35+ year heritage in the design of batch automation system products and solutions for the fine chemicals, food, beverage and pharmaceutical markets.

800xA Batch Management, like all functional areas within System 800xA, has been designed to support the stepwise evolution of existing process control systems. As part of a facility's evolution strategy, one option is the introduction of System 800xA while retaining the existing controller and its existing control strategy.

800xA Batch Management can supervise controller phase logic in Harmony Bridge Controllers. The existing equipment phase logic configured using Batch90 and resident in PHASEX function codes can be reused without modification.

800xA Batch Management can supervise controller phase logic configured in TCL resident in either AC460 or SC controllers. The existing TCL equipment phase logic is retrofitted into the S88PHASE TCL template for 800xA Batch Management. This is included with System 800xA for MOD 300.

The 800xA Batch Management can supervise controller phase logic in DCU controllers. The existing equipment phase logic configured using CCL can be reused without modification.

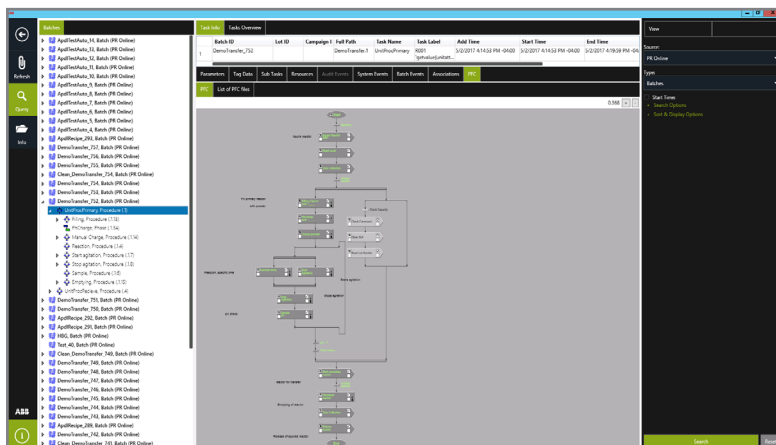
Functionality to meet regulatory requirements

For manufacturing processes subject to licensing and inspections by regulatory bodies such as FDA, MHRA, TGA, the ABB Ability™ System 800xA provides the tools needed to achieve compliance.

Security, audit trail, change management, electronic signature and automated reporting are integral to all operations and system applications.

800xA Batch Management enforces the production sequence necessary to consistently produce on-spec product. In combination with 800xA PR Batch History, complete electronic batch production records that fully document manufacturing compliance are generated.

Batch View user interface



**solutions.abb/800xA
solutions.abb/controlsystems**

800xA is a registered or pending trademark of ABB. All rights to other trademarks reside with their respective owners

We reserve the right to make technical changes to the products or modify the contents of this document without prior notice. With regard to purchase orders, the agreed particulars shall prevail. ABB does not assume any responsibility for any errors or incomplete information in this document.

We reserve all rights to this document and the items and images it contains. The reproduction, disclosure to third parties or the use of the content of this document –including parts thereof – are prohibited without ABB's prior written permission.

Copyright© 2020 ABB
All rights reserved

