

Quick Start Guide EtherNet/IP (RETA-01) setting up 5 or more Datawords with RS LOGIX® 5000 Software

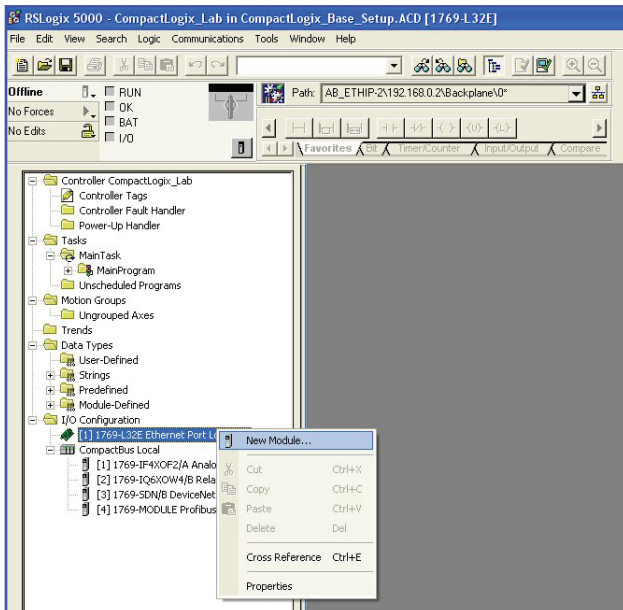


Overview

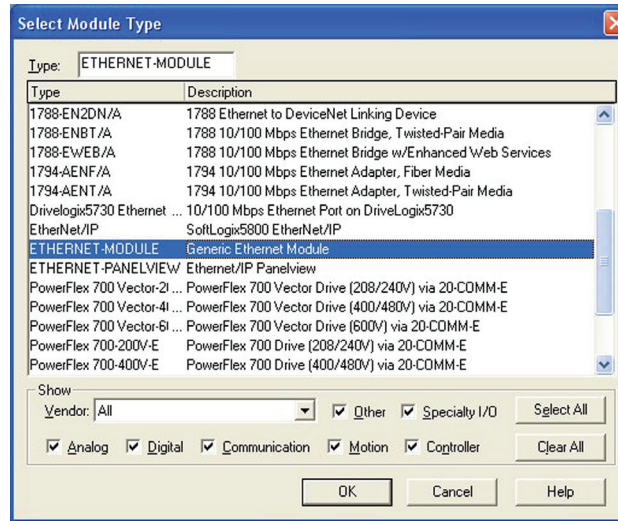
Description:

This instruction will show you how to program Datawords 5 - 12 in the RETA-01 module. The 5th Dataword or more are programmed using an explicit message (Class 3 CIP message) write to the RETA-01.

1. Program the ACS800 or ACS/ACH550 for 4 Input/Output Datawords using parameter group 51.
2. Open RS Logix® 5000 and open a RS Logix® 5000 program. Right click on the 1769-L32E EtherNet Port LocalENB. Click on New Module.



3. Select Module Type: ETHERNET-MODULE.



4. Enter the following information.

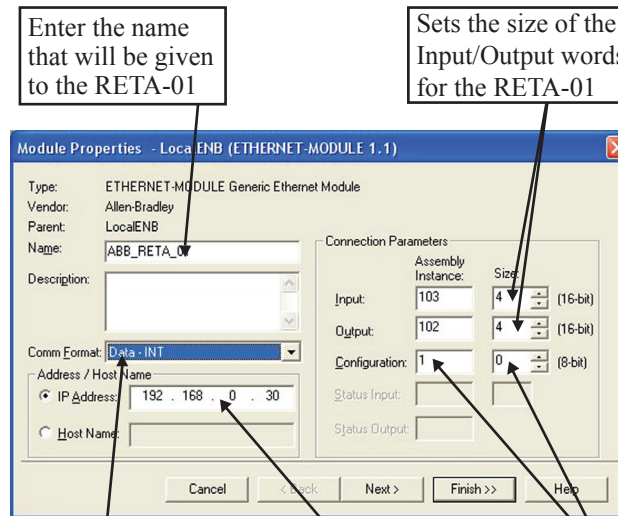


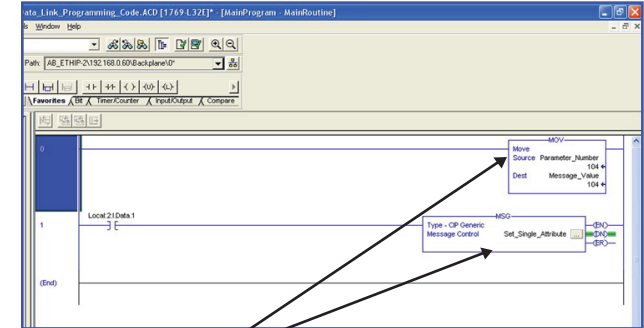
ABB RETA-01 uses 16 Bit words, change Comm Format to Data - INT (16Bits)

Enter the IP Address of the RETA-01

Configuration needs to be programmed to 1 and size to 0

5. Click Finish.

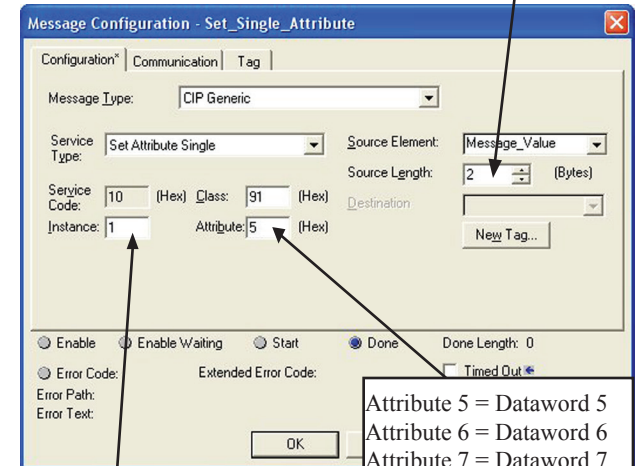
6. Input the following ladder logic program.



Tag information:

Name	Type
Parameter_Number	INT
Message_Value	INT
Set_Single_Attribute	MSG

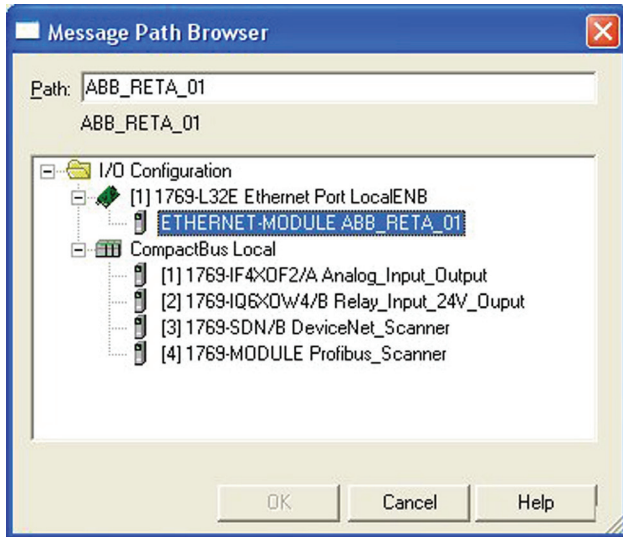
7. Setup the following information in the message configuration. Instance 1 will set (PLC Output Dataword) and instance 2 will set (PLC Input Dataword). The Source Length will be 2 (bytes).



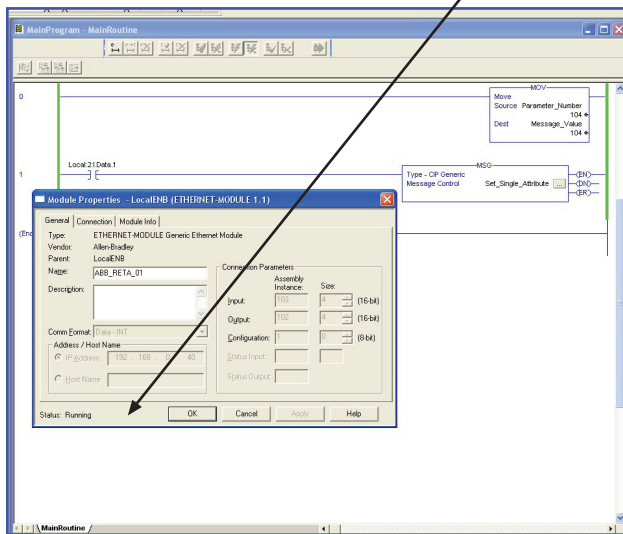
Instance 1 = Output Dataword
Instance 2 = Input Dataword

Attribute 5 = Dataword 5
Attribute 6 = Dataword 6
Attribute 7 = Dataword 7
Attribute 8 = Dataword 8
Attribute 9 = Dataword 9
Attribute A = Dataword 10
Attribute B = Dataword 11
Attribute C = Dataword 12

- Under the Communication tab in the message configuration window select the ABB_RETA_01. Then click OK.

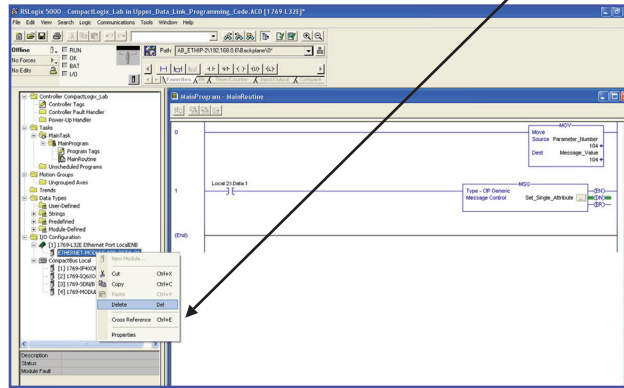


- Download the program to the PLC. Then, go online with the PLC and switch PLC to run mode. Check to make sure the PLC is online with the ABB RETA-01



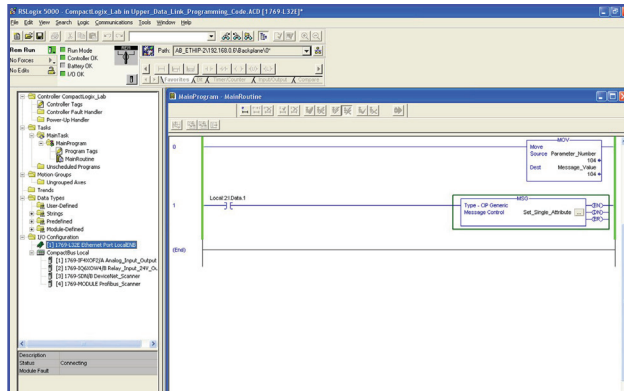
- Go off line with the PLC.

- Right click on the ABB_RETA_01 and select delete.



NOTE! The RETA-01 must be off line for the setting of Dataword 5 or more. If the RETA-01 is online (class 1 connection) you will be unable to program Dataword 5 or more.

- Download the program to the PLC and go online with the PLC. Switch the PLC to run mode.

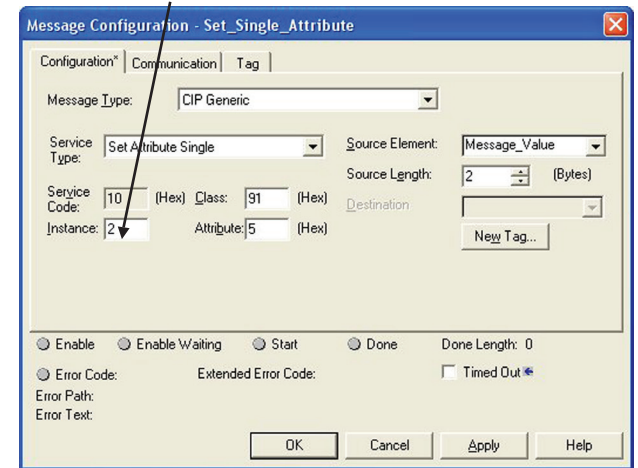


- Set the tag value (Parameter_Number) which was created in Step 6 to the drive parameter you want to write. This will program Output Dataword 5 to point to the drive parameter (e.g. 2202).

- Trigger the MSG function (Single_Attribute_Message) that was created in Step 6. This will program Output Dataword 5 to point to Parameter 2202.

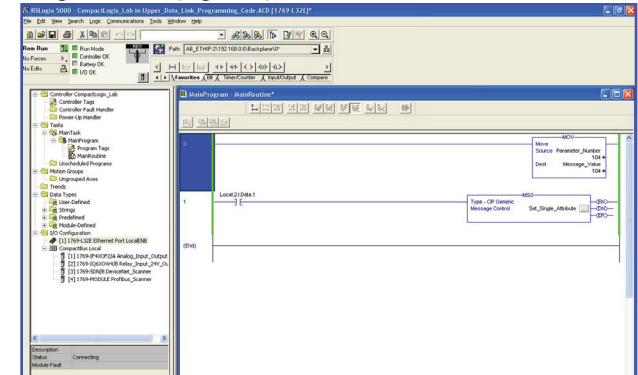
- The message should go (EN) enabled and then (DN) done. If the Set_Single_Attribute message (ER) errors check the setup.

- Change the message configuration to write PLC Input Dataword.



- Change the tag value (Parameter_Number) which was created in Step 6 to the drive parameter you want to read. This will program Input Dataword 5 to point to the drive parameter (e.g. 104).

- Trigger the MSG function (Single_Attribute_Message) that was created in Step 6. This will program Input Dataword 5 to point to the drive parameter (e.g. 104).



- The message should go (EN) enabled and then (DN)done. If the Set_Single_Attribute message (ER) errors check setup.

- The RETA-01 is setup for 5 Input/Output Datawords.

- If more Datawords are needed repeat steps 13 - 19.