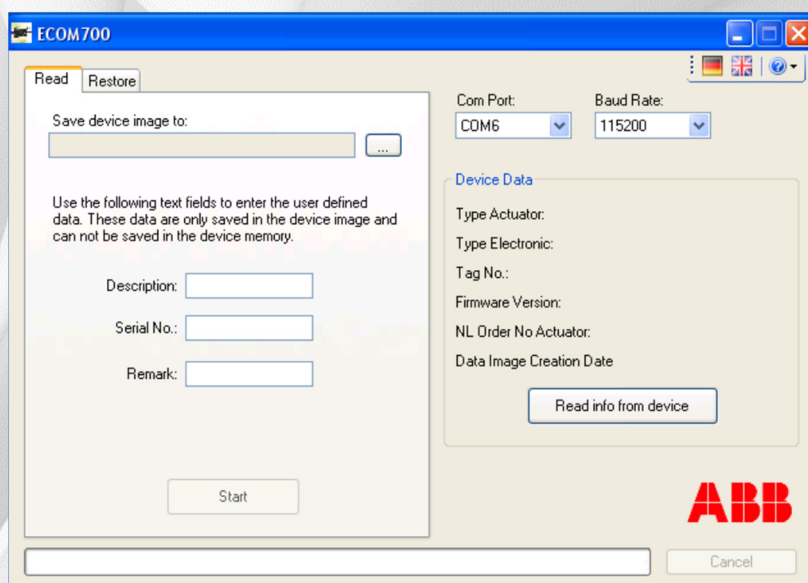


ABB MEASUREMENT & ANALYTICS | DATA SHEET

Software for Contrac control actuator

For operation, parameterization and service



Software for reading and writing operating software for Contrac control actuators.

ECOM688 / ECOM700 – For reading and writing device software

- Backup and archiving of device data
- Setup of ready-to-use electronic units with backed up data
- Significantly reduces the number of devices that need to be kept in stock
- Actuator ready for immediate operation without the need for readjustment

Device Type Manager (DTM) for Contrac

- Graphical user interface
- Operation, configuration and parameterization
- Comprehensive diagnostic functions
- Operation in framework applications with FDT interface

Device Type Manager (DTM)

The graphical user interface can be used for configuring, reading, and writing device-specific parameters. What's more, it also supports the reading out, archiving, and management of individual items of maintenance and diagnostic data.

In order to operate the DTM, you will need a special frame application plus FDT interface. In the case of centralized operation, this can take the form of the control system; in the case of a stand-alone application, a solution such as DAT200 (Asset Vision Basic) can be used.

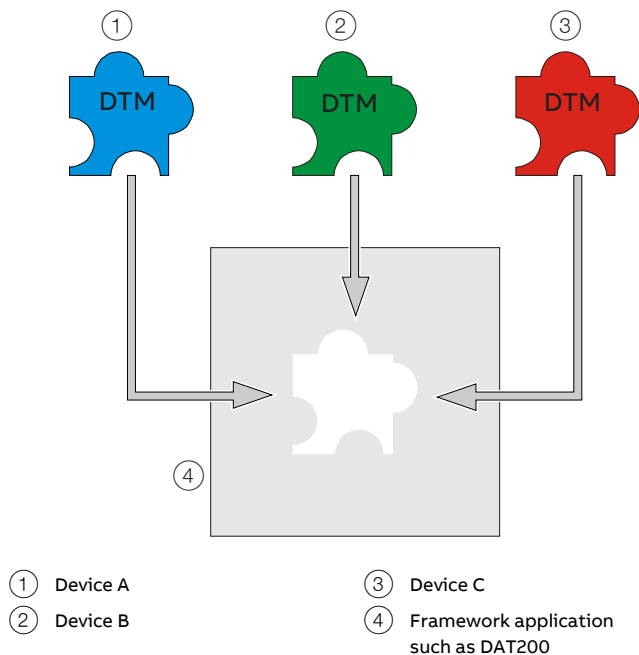


Figure 1: FDT / DTM Philosophy

Note

For details concerning installation, technical features, order information, price, and delivery time, please refer to data sheet DS/DTM/DAT200.

ECOM688 / ECOM700

Note

Contrac electronic units with software version ≥ 2.00 require ECOM700.

Contrac electronic units with software version < 2.00 require ECOM688.

The ECOM688 / ECOM700 software is intended for loading and reading the operating software for Contrac actuators. The exported data can be archived or transferred to other devices. This enables an exact copy of a particular actuator configuration to be created ('cloning').

As soon as the device data has been loaded, the device is immediately ready for operation with the correct settings. There is no need for readjustment, e.g. in terms of the operating range.

Installation

The software can be installed and operated on the Windows XP, Windows Vista or Windows 7 operating systems. The electronic unit of the actuator and the PC / laptop are connected via an RS232 interface and a null modem cable with a 9-pin SUB-D connector. In order to use the USB port on the PC, an additional, commercially available USB to RS232 adapter is required between the PC and null modem cable. The USB to RS232 adapter is available from the manufacturer of the Contrac electronic unit on request.

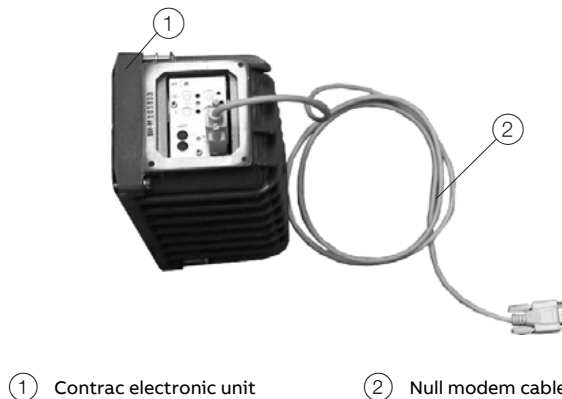
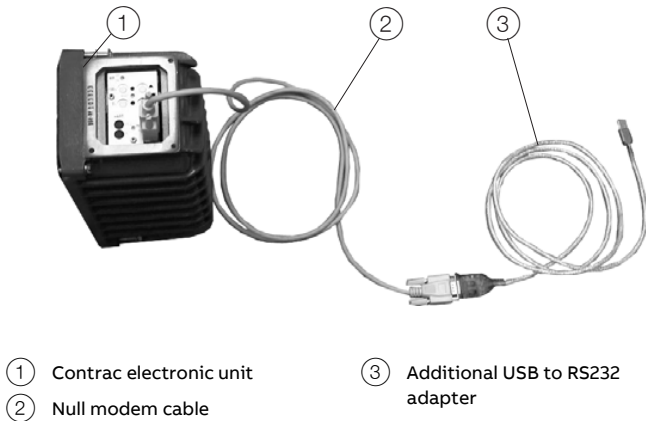


Figure 2: Cable connection when using the RS232 interface on the PC

... ECOM688 / ECOM700



① Contrac electronic unit

② Null modem cable

③ Additional USB to RS232 adapter

Figure 3: Cable connection when using the USB interface on the PC

System requirements

Computer	Pentium II or higher
Operating system	Windows XP, Windows Vista, Windows 7
Main memory	128 MB
Memory capacity (hard drive)	Min. 1.5 MB free for the program; an additional 270 kB (approx.) is required for each data set
CD drive	
Interfaces	RS232 (COM) / USB

Ordering Information

Description	Order number
RHD(E) / RSD(E) / PME / LME Save & Restore-Tool ECOM688 Supplied on 1 CD	3201110
RHD(E) / RSD(E) / PME / LME Save & Restore-Tool ECOM700 Supplied on 1 CD	3KXE911100L0001



Trademarks

Windows, Windows XP, Windows Vista and Windows 7 are trademarks or registered trademarks of Microsoft Corporation.

Sales



Service



Notes

ABB Limited**Measurement & Analytics**

Howard Road, St. Neots
Cambridgeshire, PE19 8EU
UK

Tel: +44 (0)870 600 6122

Fax: +44 (0)1480 213 339

Email: enquiries.mp.uk@gb.abb.com

ABB Inc.**Measurement & Analytics**

125 E. County Line Road
Warminster, PA 18974
USA

Tel: +1 215 674 6000

Fax: +1 215 674 7183

ABB Automation Products GmbH**Measurement & Analytics**

Schillerstr. 72
32425 Minden
Germany

Tel: +49 571 830-0

Fax: +49 571 830-1806

abb.com/actuators

We reserve the right to make technical changes or modify the contents of this document without prior notice. With regard to purchase orders, the agreed particulars shall prevail. ABB does not accept any responsibility whatsoever for potential errors or possible lack of information in this document.

We reserve all rights in this document and in the subject matter and illustrations contained therein. Any reproduction, disclosure to third parties or utilization of its contents – in whole or in parts – is forbidden without prior written consent of ABB.

Copyright © 2018 ABB
All rights reserved

3KXE911002R1001