



ABB MEASUREMENT & ANALYTICS | TECHNICAL BULLETIN | 2106369TB-TB214

Software Update

300 MHZ RMC-100

September 19, 2019

1 Introduction

This document provides a procedure to apply a software patch for the 300 MHz RMC-100 devices that are installed in the field. This patch will prepare the device for upgrade to the versions listed in [Table 1 Software Versions](#)



IMPORTANT NOTE: The procedure must be performed before the software is updated with the versions below. Failure to do so might render the device unusable.

2 Description

Field upgrade of the 300MHZ- RMC-100 to the software versions below, has caused compatibility issues with the OS and Flash. ABB has provided a software patch to prevent these issues.

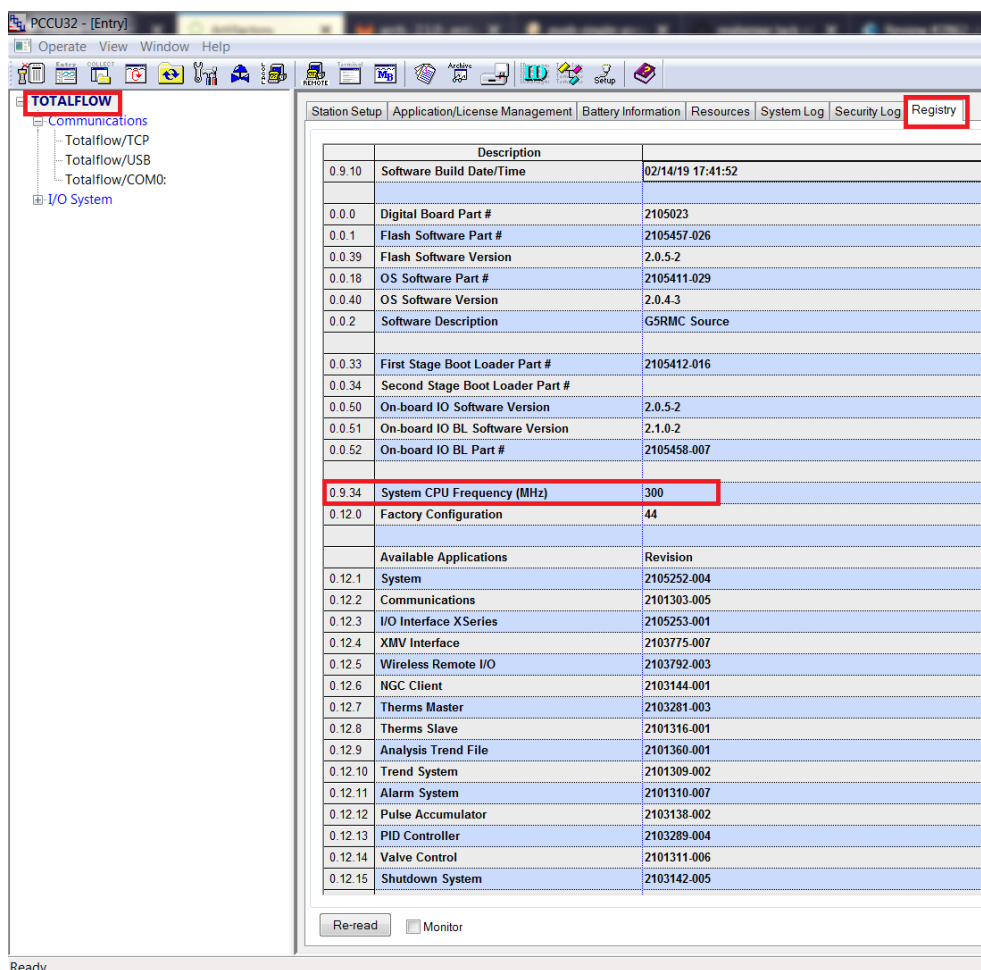
Table 1 Software Versions

| Package Name | Package / Software Version Number |
|------------------|-----------------------------------|
| Customer Package | 2105452-030 or later |
| OS | 2105411-030 or later |
| Flash | 2105457-027 or later |

3 Identify the RMC-100 set at 300 MHZ

To identify devices requiring the patch:

1. Connect with the device using PCCU Entry Mode. The latest version of PCCU is recommended for this procedure.
2. Click the station ID on the navigation tree (Default Station ID is **TOTALFLOW**). See following figure).
3. Click **Registry**.
4. Locate the System CPU Frequency (MHz) parameter. If this value is **300**, the RMC is a 300 MHz device. Proceed to Section 4 and 5 to apply the patch.



4 Preparation

Before applying the patch:

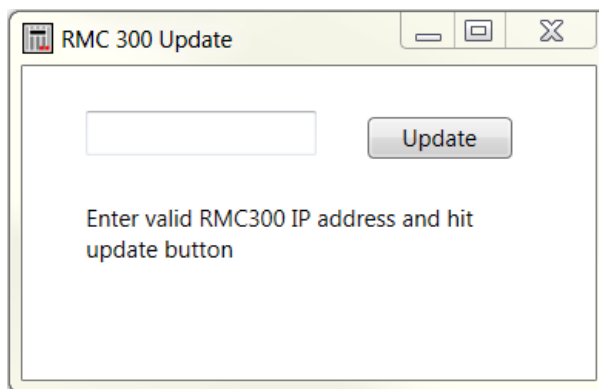
1. Make sure that the device is running at 300 MHz (as described in section 3).
2. Obtain and install the update software.
 - a. Call customer support for directions for downloading the software. Phone: 918 338 4888.
 - b. Unzip the RMC300Update.zip file onto the PC.
3. Make sure that the RMC Ethernet port is enabled and connected to the network with a valid IP address.
4. Make sure that the security switch on the RMC board is off.

5 Update procedure

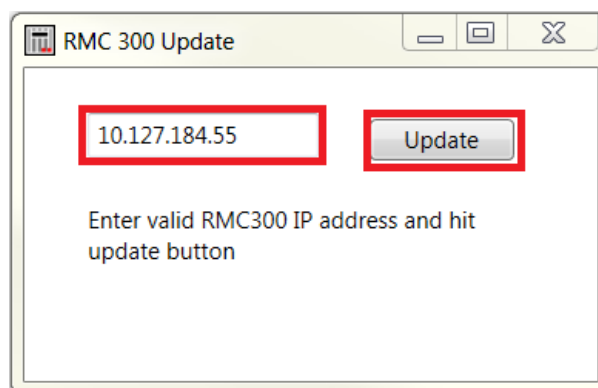


IMPORTANT NOTE: The procedure involves **automatic restart** of the device and all required procedures should be followed to enable the reset.

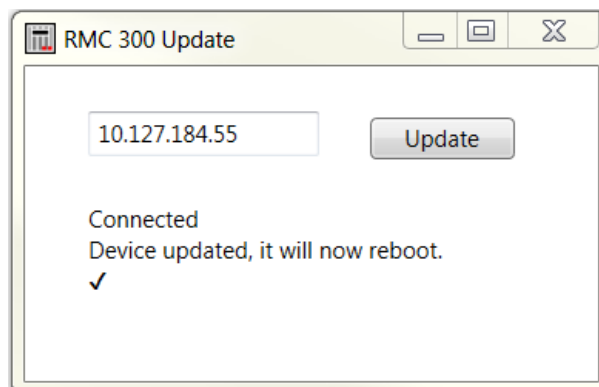
1. Double click **RMC300Update.exe**. The following window displays.



2. Enter the IP address of the RMC 300 MHz device in the window provided, click **Update**.



3. If the procedure is successful, the following messages are displayed as shown in the image below.



4. Wait for the device to restart.
5. Reconnect with the device using PCCU.
6. Verify that the System CPU Frequency is set to 720 (see figure below). Use the steps in Section [3 Identify the RMC-100 set at 300 MHZ](#).

PCCU32 - [Entry]

Operate View Window Help

TOTALFLOW

- Communications
 - Totalflow/TCP
 - Totalflow/USB
 - Totalflow/COM0:
- I/O System

Station Setup Application/License Management Battery Information Resources System Log Security Log Registry

| | Description | Value |
|--------|---------------------------------|-------------------|
| 0.9.10 | Software Build Date/Time | 02/14/19 17:41:52 |
| 0.0.0 | Digital Board Part # | 2105023 |
| 0.0.1 | Flash Software Part # | 2105457-026 |
| 0.0.39 | Flash Software Version | 2.0.5-2 |
| 0.0.18 | OS Software Part # | 2105411-029 |
| 0.0.40 | OS Software Version | 2.0.4-3 |
| 0.0.2 | Software Description | G5RMC Source |
| 0.0.33 | First Stage Boot Loader Part # | 2105412-016 |
| 0.0.34 | Second Stage Boot Loader Part # | |
| 0.0.50 | On-board IO Software Version | 2.0.5-2 |
| 0.0.51 | On-board IO BL Software Version | 2.1.0-2 |
| 0.0.52 | On-board IO BL Part # | 2105458-007 |
| 0.9.34 | System CPU Frequency (MHz) | 720 |
| 0.12.0 | Factory Configuration | 44 |
| | Available Applications | Revision |
| 0.12.1 | System | 2105252-004 |
| 0.12.2 | Communications | 2101303-005 |
| 0.12.3 | I/O Interface XSeries | 2105253-001 |
| 0.12.4 | XMV Interface | 2103775-007 |
| 0.12.5 | Wireless Remote I/O | 2103792-003 |
| 0.12.6 | NGC Client | 2103144-001 |
| 0.12.7 | Therms Master | 2103281-003 |

Re-read Monitor

Print Screen Save Send Close Help X Help

Ready #Polls: 20 #Errors: 0 Connected to TOTALFLOW Login: user



ABB Inc.

Measurement & Analytics

Quotes: totalflow.inquiry@us.abb.com

Orders: totalflow.order@us.abb.com

Training: totalflow.training@us.abb.com

Support: upstream.support@us.abb.com

+1 800 442 3097 (opt. 2)

www.abb.com/upstream

Additional free publications are available for download at:

www.abb.com/totalflow

Main Office - Bartlesville
7051 Industrial Blvd
Bartlesville, OK 74006
Ph: +1 918 338 4888

Kansas Office - Liberal
2705 Centennial Blvd
Liberal, KS 67901
Ph: +1 620 626 4350

Texas Office – Odessa
8007 East Business 20
Odessa, TX 79765
Ph: +1 432 272 1173

Texas Office - Houston
3700 W. Sam Houston
Parkway S., Suite 600
Houston, TX 77042
Ph: +1 713 587 8000

Texas Office – Pleasanton
150 Eagle Ford Road
Pleasanton, TX 78064
Ph: +1 830 569 8062

We reserve the right to make technical changes or modify the contents of this document without prior notice. Regarding purchase orders, the agreed shall prevail. ABB does not accept any responsibility whatsoever for potential errors or possible lack of information in this document.

We reserve all rights in this document and in the subject matter and illustrations contained therein. Any reproduction, disclosure to third parties or utilization of its contents - in whole or in parts – is forbidden without prior written consent of ABB.

Copyright© 2019 ABB all rights reserved